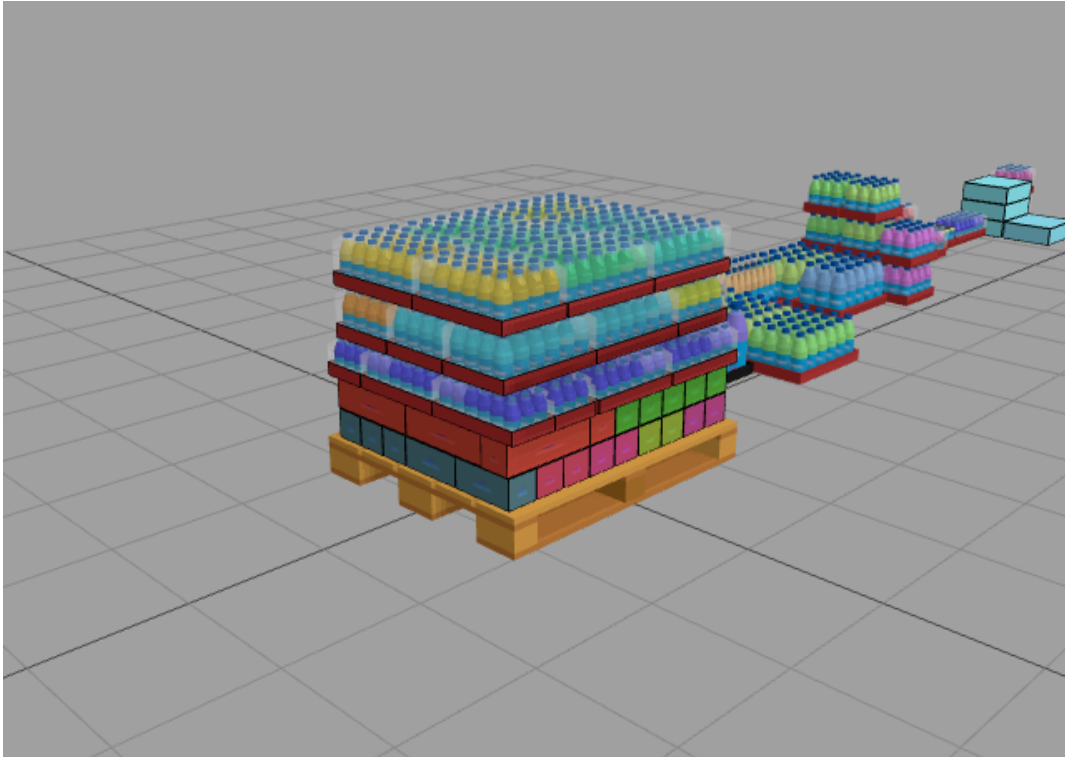


Order 10980619901 · SSCC: 00100120009782097550



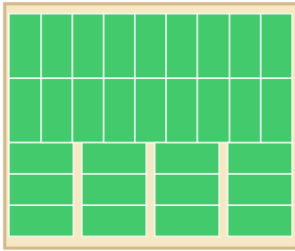


Article List - Order 10980619901 - SSCC: 00100120009782097550

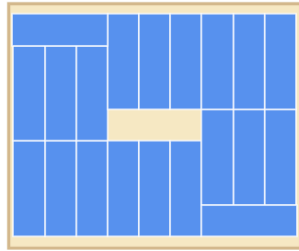
Layer	Pattern	Art.ID	Article Name	Pkg.ID	Package Name	Qty
1	1261#30-0_large	165041	12OZ CN 8/3 FM BUBLY CHE SPK FM	1261	12OZ CN 8/3 (8PACK) FM	6
1	1261#30-0_large	171846	12OZ CN 8/3 FM BUBLY BBRY POMSPK	1261	12OZ CN 8/3 (8PACK) FM	6
1	1261#30-0_large	200409	12OZ CN 8/3 FM BUBLY CCNT PN FM	1261	12OZ CN 8/3 (8PACK) FM	6
1	1261#30-0_large	207016	12OZ CN 8/3 FM BUBLY BLN BLS SPK	1261	12OZ CN 8/3 (8PACK) FM	6
1	1261#30-0_large	209287	12OZ CN 8/3 FM BUBLY ORG CRM SPK	1261	12OZ CN 8/3 (8PACK) FM	6
2	1128#20-0_large	83778	12OZ CN 12/2 FM MDEW CD RD	1128	12OZ CN 12/2 FM (12PACK)	10
2	1128#20-0_large	166035	12OZ CN 12/2 FM CF DT PEPSI ORIG	1128	12OZ CN 12/2 FM (12PACK)	10
3	2106#9+1131#8-0_large	173509	12OZ PL 18/1 GAT ZRO GLCR	2106	12OZ PL 18/1 (18PACK)	9
3	2106#9+1131#8-0_large	197257	16OZ CN 1/12 RKSTR SF	1131	16OZ CN 1/12 (LOOSE)	8
4	2521#8-0_large	130566	20OZ WM PL 8/3 GAT GLCR FRZ	2521	20OZ WM PL 8/3 (8PACK)	1
4	2521#8-0_large	144094	20OZ WM PL 8/3 GAT GLCR CHE	2521	20OZ WM PL 8/3 (8PACK)	2
4	2521#8-0_large	168776	20OZ WM PL 8/3 GAT ZRO GLCR FRZ	2521	20OZ WM PL 8/3 (8PACK)	5
5	2521#8-0_large	130573	20OZ WM PL 8/3 GAT FRC GRP	2521	20OZ WM PL 8/3 (8PACK)	2
5	2521#8-0_large	144094	20OZ WM PL 8/3 GAT GLCR CHE	2521	20OZ WM PL 8/3 (8PACK)	1
5	2521#8-0_large	168490	20OZ WM PL 8/3 GAT ZRO ORG	2521	20OZ WM PL 8/3 (8PACK)	3
5	2521#8-0_large	168491	20OZ WM PL 8/3 GAT ZRO GLCR CHE	2521	20OZ WM PL 8/3 (8PACK)	2
6	Manual	3155	2L PL 1/8S DT MDEW	455	2 LITER PL 1/8 SHELL (LOOSE)	1
6	Manual	5866	20OZ PL 1/24S PEPSI	735	20OZ PL 1/24 SHELL (LOOSE)	1
6	Manual	5877	20OZ PL 1/24S MDEW	735	20OZ PL 1/24 SHELL (LOOSE)	1
6	Manual	31104	20OZ PL 1/24S PEPSI WCHE	735	20OZ PL 1/24 SHELL (LOOSE)	1
6	Manual	32065	1L PL 1/15S AQUA WTR	824	1 LITER PL 1/15 SHELL (LOOSE)	1
6	Manual	32767	1L PL 1/15S SCHW TON	824	1 LITER PL 1/15 SHELL (LOOSE)	1
6	Manual	92443	20OZ WM PL 1/24 GAT CL BLU	1130	20OZ WM PL 1/24 (LOOSE)	2
6	Manual	102981	2L PL 1/8S PEPSI ZR SGR	455	2 LITER PL 1/8 SHELL (LOOSE)	1
6	Manual	120342	12OZ PL 8/3S MDEW	1538	12OZ PL 8/3 SHELL (8PACK)	1
6	Manual	140533	14OZ PL 1/12 MM MM P40KOCHOC	4059	14OZ PL 1/12 (LOOSE) MM	2
6	Manual	148364	64OZ PL 1/8 LPT PLF UNSNL	762	64OZ PL 1/8 (LOOSE)	1
6	Manual	166209	7.5OZ CN 10/3 PEPSI	2620	7.5OZ CN PK 10/3 (10 PACK)	3
6	Manual	173509	12OZ PL 18/1 GAT ZRO GLCR	2106	12OZ PL 18/1 (18PACK)	1
6	Manual	174228	9.6OZ CN 1/12 STRBK NTRO CB UNS	1986	9.6OZ CN 1/12 (LOOSE)	1
6	Manual	199214	20OZ PL 1/12 GAT GLYT STW KW	975	20OZ PL 1/12 (LOOSE)	3
6	Manual	199215	20OZ PL 1/12 GAT GLYT ORG	975	20OZ PL 1/12 (LOOSE)	3
6	Manual	209226	20OZ PL 1/12 GAT ZR GLYT STWKW	975	20OZ PL 1/12 (LOOSE)	2
6	Manual	320332	7.5OZ CN 10/3 MUG RT BR	2620	7.5OZ CN PK 10/3 (10 PACK)	1
6	Manual	324186	2L PL 1/8S MDEW BJA BLST	455	2 LITER PL 1/8 SHELL (LOOSE)	1

Layer Views - Order 10980619901 - SSCC: 00100120009782097550

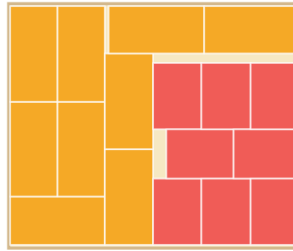
Layer 1: 1261#30-0_large



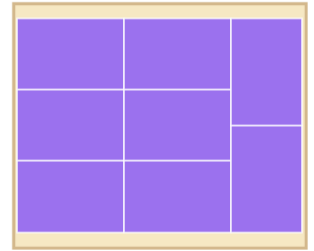
Layer 2: 1128#20-0_large



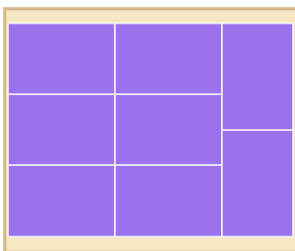
Layer 3: 2106#9+1131#8-0_large



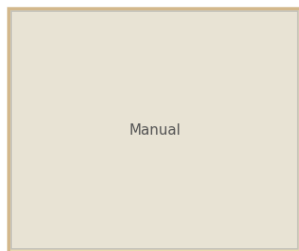
Layer 4: 2521#8-0_large



Layer 5: 2521#8-0_large



Layer 6: Manual





Stacking Matrix - Order 10980619901 - SSCC: 00100120009782097550

↓ Bottom \ Top →	1128#20-0_large	1261#30-0_large	2106#9+1131#8-0_large	2521#8-0_large
1128#20-0_large	0	—	2385	2150
1261#30-0_large	1020	0	2385	2170
2106#9+1131#8-0_large	2500	—	750	2600
2521#8-0_large	—	—	—	600

Layer Summary

Layer	Pattern	Stacking Cost
1	1261#30-0_large	—
2	1128#20-0_large	1020
3	2106#9+1131#8-0_large	2385
4	2521#8-0_large	2600
5	2521#8-0_large	600
6	Manual	—